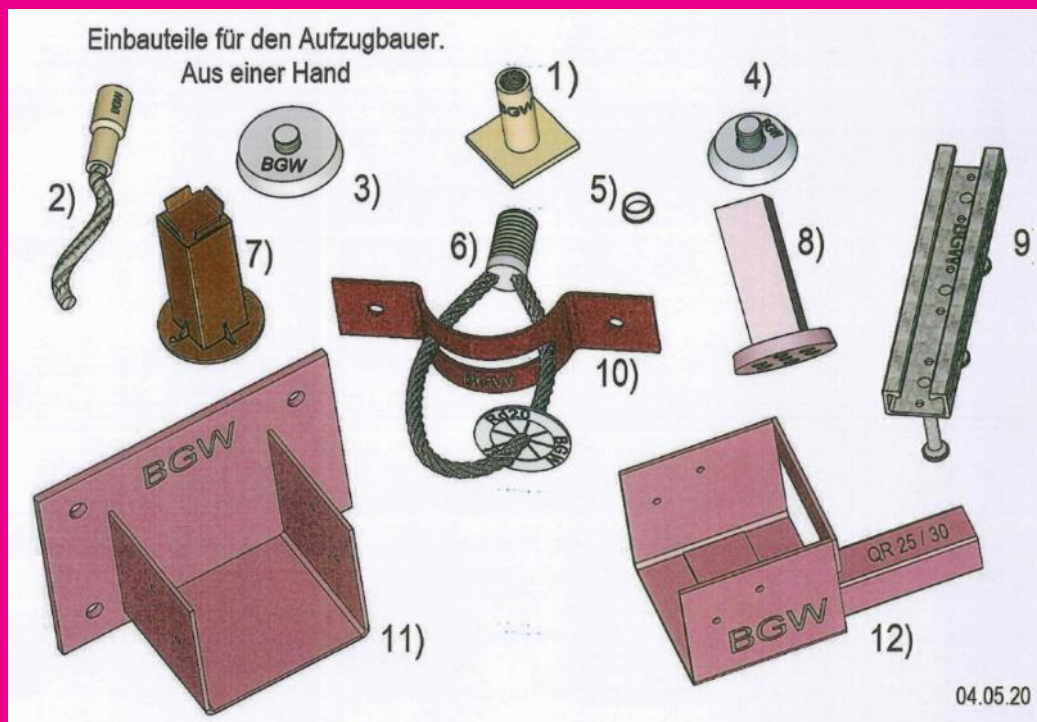


# BGW - Lift construction



**BGW**

bohr GmbH  
GERMAN QUALITY  
SINCE 1986

## Contents

BGW installation parts for elevator builders.....	3
BGW anchor channels (AS)-40/22 hot rolled.....	4
BGW flat steel anchors (FSA) M and Rd thread – galvanised .....	5
BGW double wave anchor (DWL) M and Rd thread – galvanised, V2A, V4A.....	5
BGW double wave anchor (DWK) M and Rd thread – galvanised, V2A, V4A .....	5
BGW ribbed base anchor (RFA) M and Rd thread – galvanised.....	6
BGW holding magnets type HM4 with welded-in threaded pin .....	6
BGW scaffolding shoes/scaffolding sleeves (for elevator construction) .....	6
BGW magnets for holding scaffolding sleeves on the steel formwork.....	8
Anti-unscrewing device for rope loops .....	10

***You can find all of the products listed here and more in our complete catalogue!***

**→ [https://www.bgw-bohr.de/pdf/BGW\\_Catalogue\\_EN.pdf](https://www.bgw-bohr.de/pdf/BGW_Catalogue_EN.pdf)**

## BGW installation parts for elevator builders

Everything from a single source!

Image	Item no.	Description/dimensions	€/unit																																																																																																																																																																													
1	0354/55	Flat steel anchor – galvanised – without hole in plate Rd16 x 55 mm	2.60																																																																																																																																																																													
1	0358	Flat steel anchor – galvanised – with hole in plate Rd20 x 47 mm	3.17																																																																																																																																																																													
2	0254	DWK – double wave anchor, short form – galvanised sleeve Rd16 x 167 mm	1.07																																																																																																																																																																													
2	0258	DWK – Double wave anchor, short form – Galvanised sleeve Rd20 x 187 mm	1.99																																																																																																																																																																													
2	0204	DWL – Double wave anchor, long form – Galvanised sleeve Rd16 x 216 mm	1.18																																																																																																																																																																													
2	0208	DWL - Double wave anchor, long form - Galvanised sleeve 20 x 257 mm	2.07																																																																																																																																																																													
2	0471	Ribbed foot anchor – galvanised sleeve Rd16 x 140 mm	1.55																																																																																																																																																																													
2	0437	Ribbed foot anchor – galvanised sleeve Rd20 x 170 mm	2.40																																																																																																																																																																													
3	HM4-3 M16-1	Adhesive magnet M16	72																																																																																																																																																																													
3	HM4-3 M20-1	Magnetic holder M20	72.00																																																																																																																																																																													
4	0904	Plastic retaining disc (nail plate) M16	0.35																																																																																																																																																																													
4	0908	Plastic retaining disc (nail plate) M20	0.36																																																																																																																																																																													
5	0954	Sealing plug M16	0.11																																																																																																																																																																													
5	0958	Sealing plug M20	0.12																																																																																																																																																																													
6	0654	Rope loop Rd16 x 155 mm	5.78																																																																																																																																																																													
6	0658	Rope loop Rd20 x 215 mm	8.18																																																																																																																																																																													
6	0658-130	Rope loop Rd20 x 130 mm	8.30																																																																																																																																																																													
7	09025	Scaffolding sleeve for 25 mm shoe	1.65																																																																																																																																																																													
7	09030	Scaffolding sleeve for 30 mm shoe	2.15																																																																																																																																																																													
8	HM4-G-25	Magnet for scaffolding sleeve 25 mm	65																																																																																																																																																																													
8	HM4-G-30	Magnet for scaffolding sleeve 30 mm	65.00																																																																																																																																																																													
9	<b>BGW anchor rails ETA-16/0387 approval</b>																																																																																																																																																																															
<table><tr><th colspan="2">Item no.</th><th rowspan="2">Profile</th><th rowspan="2">Length mm</th><th rowspan="2">Quantity Anchors</th><th rowspan="2">Weight kg/piece</th><th>Price</th><th>Price</th></tr><tr><th>fv</th><th>V4A</th><th>€/piece</th><th>€/piece</th></tr><tr><td></td><td></td><td></td><td></td><td></td><td></td><td>fv</td><td>V4A</td></tr><tr><td></td><td>AS-40/22-150</td><td>AS-40/22-150E</td><td>40/22</td><td>150</td><td>2</td><td>0.408</td><td>10.00</td><td>33.50</td></tr><tr><td></td><td>AS-40/22-200</td><td>AS-40/22-200E</td><td>40/22</td><td>200</td><td>2</td><td>0.524</td><td>10.50</td><td>41.00</td></tr><tr><td></td><td>AS-40/22-250</td><td>AS-40/22-250E</td><td>40/22</td><td>250</td><td>2</td><td>0.639</td><td>14.50</td><td>52.50</td></tr><tr><td></td><td>AS-40/22-300</td><td>AS-40/22-300E</td><td>40/22</td><td>300</td><td>2</td><td>0.755</td><td>16.00</td><td>61.00</td></tr><tr><td></td><td>AS-40/22-350</td><td>AS-40/22-350E</td><td>40/22</td><td>350</td><td>3</td><td>0.901</td><td>17.50</td><td>66.00</td></tr><tr><td></td><td>AS-40/22-400</td><td>AS-40/22-400E</td><td>40/22</td><td>400</td><td>3</td><td>1.016</td><td>19.50</td><td>73.50</td></tr><tr><td></td><td>AS-40/22-550</td><td>AS-40/22-550E</td><td>40/22</td><td>550</td><td>3</td><td>1,363</td><td>26.00</td><td>97.50</td></tr><tr><td></td><td>AS-40/22-800</td><td>AS-40/22-800E</td><td>40/22</td><td>800</td><td>4</td><td>1,971</td><td>34.50</td><td>143.50</td></tr><tr><td></td><td>AS-40/22-1050</td><td>AS-40/22-1050E</td><td>40/22</td><td>1050</td><td>5</td><td>2,579</td><td>43.50</td><td>187.00</td></tr><tr><td></td><td>AS-40/22-1300</td><td>AS-40/22-1300E</td><td>40/22</td><td>1300</td><td>6</td><td>3.188</td><td>55.50</td><td></td></tr><tr><td></td><td>AS-40/22-1550</td><td>AS-40/22-1550E</td><td>40/22</td><td>1550</td><td>7</td><td>3,796</td><td>65.50</td><td></td></tr><tr><td></td><td>AS-40/22-1800</td><td>AS-40/22-1800E</td><td>40/22</td><td>1800</td><td>8</td><td>4.404</td><td>75.50</td><td></td></tr><tr><td></td><td>AS-40/22-2050</td><td>AS-40/22-2050E</td><td>40/22</td><td>2050</td><td>9</td><td>5.013</td><td>85.50</td><td></td></tr><tr><td></td><td>AS-40/22-2300</td><td>AS-40/22-2300E</td><td>40/22</td><td>2300</td><td>10</td><td>5.621</td><td>95.50</td><td></td></tr><tr><td></td><td>AS-40/22-2550</td><td>AS-40/22-2550E</td><td>40/22</td><td>2550</td><td>11</td><td>6,229</td><td>105.00</td><td></td></tr><tr><td></td><td>AS-40/22-3050</td><td>AS-40/22-3050E</td><td>40/22</td><td>3050</td><td>13</td><td>7.446</td><td>111.50</td><td>495.00</td></tr><tr><td></td><td>AS-40/22-6070</td><td>AS-40/22-6070E</td><td>40/22</td><td>6070</td><td>25</td><td>14,792</td><td>215.50</td><td>988.00</td></tr></table>				Item no.		Profile	Length mm	Quantity Anchors	Weight kg/piece	Price	Price	fv	V4A	€/piece	€/piece							fv	V4A		AS-40/22-150	AS-40/22-150E	40/22	150	2	0.408	10.00	33.50		AS-40/22-200	AS-40/22-200E	40/22	200	2	0.524	10.50	41.00		AS-40/22-250	AS-40/22-250E	40/22	250	2	0.639	14.50	52.50		AS-40/22-300	AS-40/22-300E	40/22	300	2	0.755	16.00	61.00		AS-40/22-350	AS-40/22-350E	40/22	350	3	0.901	17.50	66.00		AS-40/22-400	AS-40/22-400E	40/22	400	3	1.016	19.50	73.50		AS-40/22-550	AS-40/22-550E	40/22	550	3	1,363	26.00	97.50		AS-40/22-800	AS-40/22-800E	40/22	800	4	1,971	34.50	143.50		AS-40/22-1050	AS-40/22-1050E	40/22	1050	5	2,579	43.50	187.00		AS-40/22-1300	AS-40/22-1300E	40/22	1300	6	3.188	55.50			AS-40/22-1550	AS-40/22-1550E	40/22	1550	7	3,796	65.50			AS-40/22-1800	AS-40/22-1800E	40/22	1800	8	4.404	75.50			AS-40/22-2050	AS-40/22-2050E	40/22	2050	9	5.013	85.50			AS-40/22-2300	AS-40/22-2300E	40/22	2300	10	5.621	95.50			AS-40/22-2550	AS-40/22-2550E	40/22	2550	11	6,229	105.00			AS-40/22-3050	AS-40/22-3050E	40/22	3050	13	7.446	111.50	495.00		AS-40/22-6070	AS-40/22-6070E	40/22	6070	25	14,792	215.50	988.00
Item no.		Profile	Length mm	Quantity Anchors	Weight kg/piece					Price	Price																																																																																																																																																																					
fv	V4A					€/piece	€/piece																																																																																																																																																																									
						fv	V4A																																																																																																																																																																									
	AS-40/22-150	AS-40/22-150E	40/22	150	2	0.408	10.00	33.50																																																																																																																																																																								
	AS-40/22-200	AS-40/22-200E	40/22	200	2	0.524	10.50	41.00																																																																																																																																																																								
	AS-40/22-250	AS-40/22-250E	40/22	250	2	0.639	14.50	52.50																																																																																																																																																																								
	AS-40/22-300	AS-40/22-300E	40/22	300	2	0.755	16.00	61.00																																																																																																																																																																								
	AS-40/22-350	AS-40/22-350E	40/22	350	3	0.901	17.50	66.00																																																																																																																																																																								
	AS-40/22-400	AS-40/22-400E	40/22	400	3	1.016	19.50	73.50																																																																																																																																																																								
	AS-40/22-550	AS-40/22-550E	40/22	550	3	1,363	26.00	97.50																																																																																																																																																																								
	AS-40/22-800	AS-40/22-800E	40/22	800	4	1,971	34.50	143.50																																																																																																																																																																								
	AS-40/22-1050	AS-40/22-1050E	40/22	1050	5	2,579	43.50	187.00																																																																																																																																																																								
	AS-40/22-1300	AS-40/22-1300E	40/22	1300	6	3.188	55.50																																																																																																																																																																									
	AS-40/22-1550	AS-40/22-1550E	40/22	1550	7	3,796	65.50																																																																																																																																																																									
	AS-40/22-1800	AS-40/22-1800E	40/22	1800	8	4.404	75.50																																																																																																																																																																									
	AS-40/22-2050	AS-40/22-2050E	40/22	2050	9	5.013	85.50																																																																																																																																																																									
	AS-40/22-2300	AS-40/22-2300E	40/22	2300	10	5.621	95.50																																																																																																																																																																									
	AS-40/22-2550	AS-40/22-2550E	40/22	2550	11	6,229	105.00																																																																																																																																																																									
	AS-40/22-3050	AS-40/22-3050E	40/22	3050	13	7.446	111.50	495.00																																																																																																																																																																								
	AS-40/22-6070	AS-40/22-6070E	40/22	6070	25	14,792	215.50	988.00																																																																																																																																																																								
10	0518-16-20	Anti-unscrewing device for rope loops Rd16 and Rd20					10.50																																																																																																																																																																									
11	0581-200x140	Scaffold shoe for dowelling, galvanised					12.50																																																																																																																																																																									
12	0581-25	Scaffolding shoe for insertion into 25 mm bolts, galvanised					14.30																																																																																																																																																																									
12	0581-30	Scaffolding shoe for insertion into 30 mm bolts, galvanised					15.50																																																																																																																																																																									

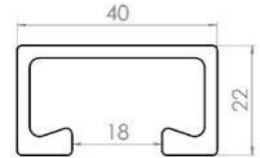
## BGW anchor channels (AS)-40/22 hot rolled

Rail channel closed with soft, easily removable foam filling. With European Technical Approval ETA-16/0387

ETA approval for anchor rails with screws:

[https://www.BGW-bohr.de/pdf/Ankerschienen\\_ETa-Zulassung-2017.pdf](https://www.BGW-bohr.de/pdf/Ankerschienen_ETa-Zulassung-2017.pdf)

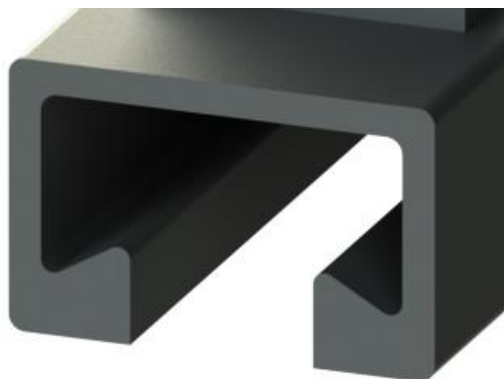
English version: <https://www.BGW-bohr.de/pdf/ETA-Zulassung-Englisch-2017.pdf>



### AS-40/22

Item no.				Profile	Length mm	Quantity	Weight	Price €/unit	Price €/unit
Hot-dip galvanised (fv)		Stainless steel (V4A)				Anchor	kg/unit	fv	V4A
AS-40/22-150	(fv)	AS-40/22-150E	(V4A)	40/22	150	2	0.408	10.00	33.50
AS-40/22-200	(fv)	AS-40/22-200E	(V4A)	40/22	200	2	0.524	10.50	41.00
AS-40/22-250	(fv)	AS-40/22-250E	(V4A)	40/22	250	2	0.639	14.50	52.50
AS-40/22-300	(fv)	AS-40/22-300E	(V4A)	40/22	300	2	0.755	16.00	61.00
AS-40/22-350	(fv)	AS-40/22-350E	(V4A)	40/22	350	3	0.901	17.50	66.00
AS-40/22-400	(fv)	AS-40/22-400E	(V4A)	40/22	400	3	1.016	19.50	73.50
AS-40/22-550	(fv)	AS-40/22-550E	(V4A)	40/22	550	3	1.363	26.00	97.50
AS-40/22-800	(fv)	AS-40/22-800E	(V4A)	40/22	800	4	1.971	34.50	143.50
AS-40/22-1050	(fv)	AS-40/22-1050E	(V4A)	40/22	1050	5	2.579	43.50	187.00
AS-40/22-1300	(fv)	AS-40/22-1300E	(V4A)	40/22	1300	6	3,188	55.50	
AS-40/22-1550	(fv)	AS-40/22-1550E	(V4A)	40/22	1550	7	3.796	65.50	
AS-40/22-1800	(fv)	AS-40/22-1800E	(V4A)	40/22	1800	8	4.404	75.50	
AS-40/22-2050	(fv)	AS-40/22-2050E	(V4A)	40/22	2050	9	5.013	85.50	
AS-40/22-2300	(fv)	AS-40/22-2300E	(V4A)	40/22	2300	10	5.621	95.50	
AS-40/22-2550	(fv)	AS-40/22-2550E	(V4A)	40/22	2550	11	6,229	105.00	
AS-40/22-3050	(fv)	AS-40/22-3050E	(V4A)	40/22	3050	13	7.446	111.50	495.00
AS-40/22-6070	(fv)	AS-40/22-6070E	(V4A)	40/22	6070	25	14,792	215.50	988.00

Images Manufacturer tensile tests: [https://www.bgw-bohr.de/pdf/Ankerschienen\\_Testversuche.pdf](https://www.bgw-bohr.de/pdf/Ankerschienen_Testversuche.pdf)



Anchor rails bent to customer specifications on request.



The goods must be checked by the customer for proper functioning as part of an incoming goods

## BGW flat steel anchors (FSA) M and Rd thread –galvanised

Due to their low height, **BGW flat steel anchors** can be used in all parts of precast concrete construction. They are particularly suitable for fastening supports and struts during the installation of precast concrete elements, for installation in flat parts such as slabs and pipes, and for machine use.

### Installation instructions:

[https://www.bgw-bohr.de/Flachstahllanker\\_Einbauanleitung.pdf](https://www.bgw-bohr.de/Flachstahllanker_Einbauanleitung.pdf)

**Test certificate:** [https://www.bgw-bohr.de/pdf/PruefberichtTUEV\\_QLHFSa.pdf](https://www.bgw-bohr.de/pdf/PruefberichtTUEV_QLHFSa.pdf)

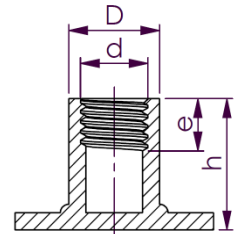
### EC declaration of conformity:

[https://www.bgw-bohr.de/pdf/CE\\_Zeichen\\_Konformitaets/CE-Erklaerung\\_BGW-Flachstahllanker\\_alleLaststufen.pdf](https://www.bgw-bohr.de/pdf/CE_Zeichen_Konformitaets/CE-Erklaerung_BGW-Flachstahllanker_alleLaststufen.pdf)

An Rd or M thread is cut into the electro-galvanised or stainless steel sleeve, which should be greased before installation in the precast concrete element. BGW holding magnets type HM4 are recommended for fixing to steel formwork. To ensure that the anchor is correctly seated when installed, BGW retaining washers or BGW recess bodies with markings must be used. Plastic sealing plugs or retaining washers are used to prevent dirt and concrete from entering the thread of the sleeve.

*The anchor lengths can be modified to suit your specific installation requirements on request.*

Flat steel anchors – galvanised – design: with hole in plate (the hole is closed with a sealing cap). This hole in the plate allows the sleeve to be better rinsed inside during galvanising, resulting in stronger galvanisation on the inside.



Rd thread Item no.	M thread Item no.	Load pcs.	Type d x h	Flat steel mm	e mm	D mm	Packaging unit Piece	kg/100 pcs	€ per piece
0354/55	0354/55M	1.2	Rd/M16 x 55	80 x 60 x 5	27	21	50	27.0	2.60
0358	0358M	2.0	Rd/M20 x 47	60 x 60 x 5	35	27	50	25.0	3.17

## BGW double wave anchor (DWL) M and Rd thread – galvanised, V2A, V4A

**Installation instructions:** [https://www.bgw-bohr.de/pdf/Einbauanleitung\\_QLH\\_DWL\\_DKW\\_SARFA.pdf](https://www.bgw-bohr.de/pdf/Einbauanleitung_QLH_DWL_DKW_SARFA.pdf)

**Approvals/tests/installation instructions:** <https://www.bgw-bohr.de/qualitaet.htm>

Threaded anchors can be very useful not only as transport anchors, but also for temporarily fastening components, steel components such as supports, struts, signs, etc. Designed like BGW rod anchors, but with a corrugated reinforcing steel end. Their design makes them particularly suitable for slim precast concrete elements and for installation in thin walls. A Rd thread is cut into the electro-galvanised or stainless steel sleeve, which should be greased before installation in the precast concrete element. **BGW holding magnets type HM4** are recommended for fixing to steel formwork. To ensure that the anchor is correctly seated when installed, **BGW retaining washers** or **BGW recess bodies with markings** must be used. **Plastic sealing plugs** or **retaining washers** are used to prevent dirt and concrete from entering the thread of the sleeve. *The anchor length and rod diameter can be modified to suit your specific installation, but it should be noted that this may change the load rating.*

**For your information:** The metallic load-bearing capacity data was first verified on 27 June 1989 in the **test report G3-MPW 33-now-kol** by the Bavarian Technical Inspection Association (TÜV Bayern E.V.). Monitoring in our own laboratory. Through pull-out tests of transport anchors from unreinforced concrete test specimens – test report M-No. 2920256 dated 26 February 1992 (by LGA Bayern). The most unfavourable anchors and the most unfavourable installation cases were selected for the tests at that time.



## BGW double wave anchor (DWK) M and Rd thread – galvanised, V2A, V4A

M thread		Rd thread		Load stage t	D mm	e mm	f mm	g = min. c x 2.5	c mm	Packaging Unit Piece	Weight kg/piece	Price €/piece
Type d x h	Item no.	Type d x h	Item no.									
M16 x 216	0204M	Rd16 x 216	0204	1.2	21.5	27	58	30	10	100	0.190	1.18
M20 x 257	0208M	Rd20 x 257	0208	2.0	27	35	70	35	14	50	0.420	2.07

**EC configuration:** [https://www.bgw-bohr.de/pdf/CE\\_Zeichen\\_Konformitaets/CE-Erkaerung\\_BGW-Doppelwellenanker\\_lang\\_alleLaststufen.pdf](https://www.bgw-bohr.de/pdf/CE_Zeichen_Konformitaets/CE-Erkaerung_BGW-Doppelwellenanker_lang_alleLaststufen.pdf)

### DWK – double wave anchor, short form – galvanised sleeve

M thread		Rd thread		Load stage t	D mm	e mm	f mm	g = min. c x 2.5	c mm	Packaging unit Piece	Weight kg/piece	Price €/piece
Type d x h	Item no.	Type d x h	Item no.									
M16 x 167	0254M	Rd16 x 167	0254	1.2	21.5	27	58	30	10	100	0.160	1.07
M20 x 187	0258M	Rd20 x 187	0258	2.0	27	35	70	35	14	50	0.330	1.99

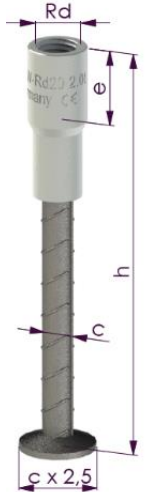
## BGW ribbed base anchor (RFA) M and Rd thread – galvanised

Threaded anchors can be very useful not only as transport anchors, but also for temporarily fastening components, steel components such as supports, struts, signs, etc.

**BGW ribbed foot anchors**, designed like BGW rod anchors but with a forged foot, are particularly suitable for slim precast concrete elements and for installation in thin walls, such as in garages, transformer stations, shaft rings, etc. The sleeve is electro-galvanised and has Rd thread. **BGW holding magnets type HM4** are recommended for fixing to steel formwork. To ensure that the anchor is correctly seated when installed, **BGW retaining washers** or **BGW recess bodies with markings** must be used. **Plastic sealing plugs** or **retaining washers** are used to prevent concrete and dirt from entering the thread.

A round thread (Rd) is cut into the electro-galvanised or stainless steel sleeve. Before installing the bar anchor in the precast concrete element, the thread should be visually inspected and greased. Round threads are particularly recommended as they are less susceptible to dirt and damage than other types of threads.

*The anchor and rod length can be modified to suit your specific installation, but please note that this may change the load rating.*



Installation instructions: [https://www.bgw-bohr.de/pdf/Einbauanleitung\\_QLH\\_DWL\\_DKW\\_SARFA.pdf](https://www.bgw-bohr.de/pdf/Einbauanleitung_QLH_DWL_DKW_SARFA.pdf)  
EC configuration: [https://www.bgw-bohr.de/pdf/CE\\_Zeichen\\_Konformitaets/CE-Erklaerung\\_BGW-Rippenfussanker\\_alleLaststufen.pdf](https://www.bgw-bohr.de/pdf/CE_Zeichen_Konformitaets/CE-Erklaerung_BGW-Rippenfussanker_alleLaststufen.pdf)

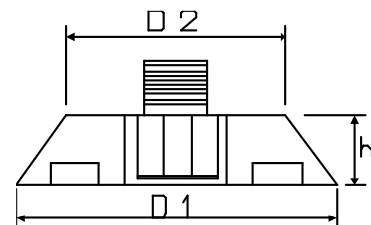
M thread		Rd thread		Load rating t	Thread depth e [mm]	Rod Ø c [mm]	Height h [mm]	Packagin g unit Piece	Weight [kg]	Price €/unit
M	Item no.	Rd	Item no.							
16	0419M	16	0471	1.2	27	10	140	100	0.140	1.55
20	0437M	20	0437	2.0	35	14	170	50	0.320	2.40

## BGW holding magnets type HM4 with welded-in threaded pin

**BGW holding magnets type HM4 with welded-in threaded pin with internal hexagon**

(a 10 mm Allen key is used for this)

Item no.	Threaded pin	Holding force kg	D 1 mm	D 2 mm	h mm	€ per piece
HM4-3 M16-1	M16	60	65	60	12	72.00
HM4-3 M20-1	M20					



**Note:** We insert each magnet into a precise countersink individually to prevent the entire system from being severely weakened if a single magnet breaks.



## BGW scaffolding shoes/scaffolding sleeves (for elevator construction)

This is a technical term for this product manufactured by us.

The scaffolding shoe is used in the lift shaft to erect a working platform on top of it.

When using a scaffolding shoe for insertion, openings are left in the component during the manufacture of the walls in the concrete plant. These can be created using the "scaffolding sleeve" that fits the scaffolding shoe or with the reusable magnetic recess body.

Another type of scaffolding shoe is dowelled to the lift wall, but it could also be attached to the component using HKS screws in pre-cast anchor rails. In order to be able to erect a safe working platform on these scaffolding shoes, they must be positioned exactly opposite each other, as in the lift shaft.

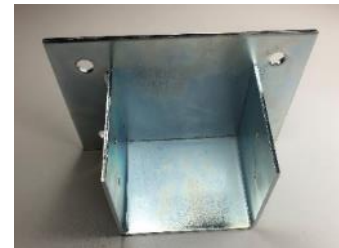
The safe cross-section of the wooden beams to be used is determined by the width of the beam support on the scaffold shoe.

Image documentation of scaffolding shoes and accessories:

[https://www.bgw-bohr.de/pdf/Bilddokumentation\\_Geruestschuhe\\_und\\_Zubehoer.pdf](https://www.bgw-bohr.de/pdf/Bilddokumentation_Geruestschuhe_und_Zubehoer.pdf)

### BGW scaffolding shoe for dowelling, galvanised For beams approx. 110 mm wide

Item no.		Weight kg/piece	Price €/piece
0581-200x140	200 x 140 mm	1.860	12.50



### BGW scaffolding shoe for insertion, galvanised For beams approx. 110 mm wide

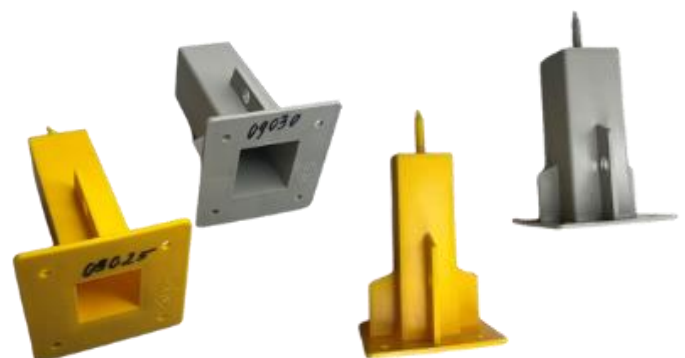
Item	Square plug-in pin mm	Weight kg/piece	Price €/piece
0581-20	20	1.546	13.30
0581-25	25	1,891	14.30
0581-30	30	2,236	15.50



### BGW scaffolding sleeve, plastic for embedding in concrete

Scaffolding sleeves are installed in the component as permanent formwork when concreting the lift interior walls. The corresponding scaffolding shoes are then inserted into the cavity created in the component during lift installation.

Item no.	Square plug pin mm	Weight kg/piece	Price €/piece
09025	25x25x95	0.030	1.65
09030	30x30x95	0.030	2.15



## BGW magnets for holding scaffolding sleeves on the steel formwork

The magnet body, protected with a release agent, is pushed into the opening of the scaffolding sleeve.

To prevent the scaffolding sleeve containing the magnet from floating during concreting and to prevent concrete from entering the scaffolding sleeve, the front end must be taped or sealed with thin adhesive tape.

The last two digits of the item number indicate the dimensions of the square section of the magnet body.



### BGW scaffold shoe recess body, magnetic with base

When concreting components such as lift shaft walls, the magnetic placeholders for the scaffolding shoe plugs are placed on the steel formwork and then removed from the component again once the concrete has hardened.

The advantage is that the plastic part, the "scaffolding sleeve", can be dispensed with.



Item no.	Adhesive force kg	Square plug pin mm	Weight kg/piece	€/piece
HM4-G-25	60	25	0.180	85
HM4-G-30	60	30	0.180	85.00



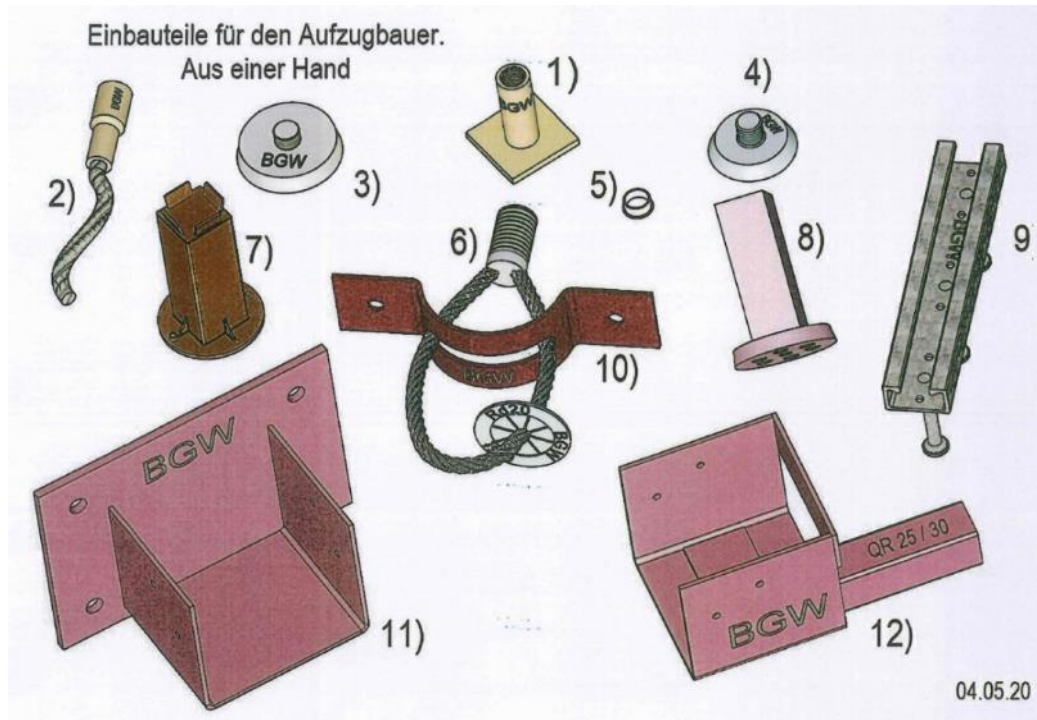
### BGW recess body ASK for scaffolding shoe

Item no.	Adhesive strength kg	Square	Packaging unit	Model	Weight kg/piece	€/piece
HM4G25/25	25	25 x 25	10	ETN		65
HM4G25/15	15	25 x 25	10	ETN		45
HM4G26/25	25	26 x 26	10	Stingl		65
HM4G26/15	15	26 x 26	10	Stingl		45
HM4G30/40	40	30 x 30	10	ETN		80
HM4G30/35	35	30 x 30	10	ETN		60
HM4G31/40	40	31 x 31	10	Hilti		80
HM4G31/35	35	31 x 31	10	Hilti		60





## BGW installation parts for elevator builders



## Anti-unscrewing device for rope loops

### Installation of the anti-unscrewing device for rope loops in lift construction:

The rope loops are screwed into the threaded anchors installed in the shaft head to hold loads. To prevent the rope loops from unscrewing themselves during operation, the anti-unscrewing device for rope loops is installed to secure their position. The rope loop must be screwed completely into the threaded anchor in the shaft head, which is set in concrete. The rope loop is brought into the correct working position by turning it back slightly by up to 90°. The rope eye, the eye of the rope loop, is guided through the longitudinal groove of the anti-unscrewing device to ensure secure fixation. The anti-rotation device is permanently fixed in the working position by securing it with two Ø 8 mm dowels through the two Ø 10 mm holes in the anti-rotation device.

Item no.	Hollowing device	Length x width	Hole distance	Hole Ø	Rope groove L x W	Bend Height	Packaging Unit	Weight kg	Price Piece
0518-16-20	M16/Rd16 M20/Rd20	210 x 50 mm	155	10	80 x 12 mm	45	50 pieces	0.245	€10.50



## Double wave anchor

### DWK – double wave anchor, short form – galvanised sleeve

Rd thread		Load rating t	D mm	e mm	f mm	g = min. c x 2.5	c mm	Packaging unit Piece	Weight kg/piece	Price €/piece
Type d x h	Item no.									
Rd16 x 167	0254	1.2	21.5	27	58	30	10	100	0.160	1.07
Rd20 x 187	0258	2.0	27	35	70	35	14	50	0.330	1.99

### DWL – double wave anchor, long form – galvanised sleeve

Rd16 x 216	0204	1.2	21.5	27	58	30	10	100	0.190	1.18
Rd20 x 257	0208	2.0	27	35	70	35	14	50	0.420	2.07

## Sealing plug

Rd16 / Rd20 €0.25 each

